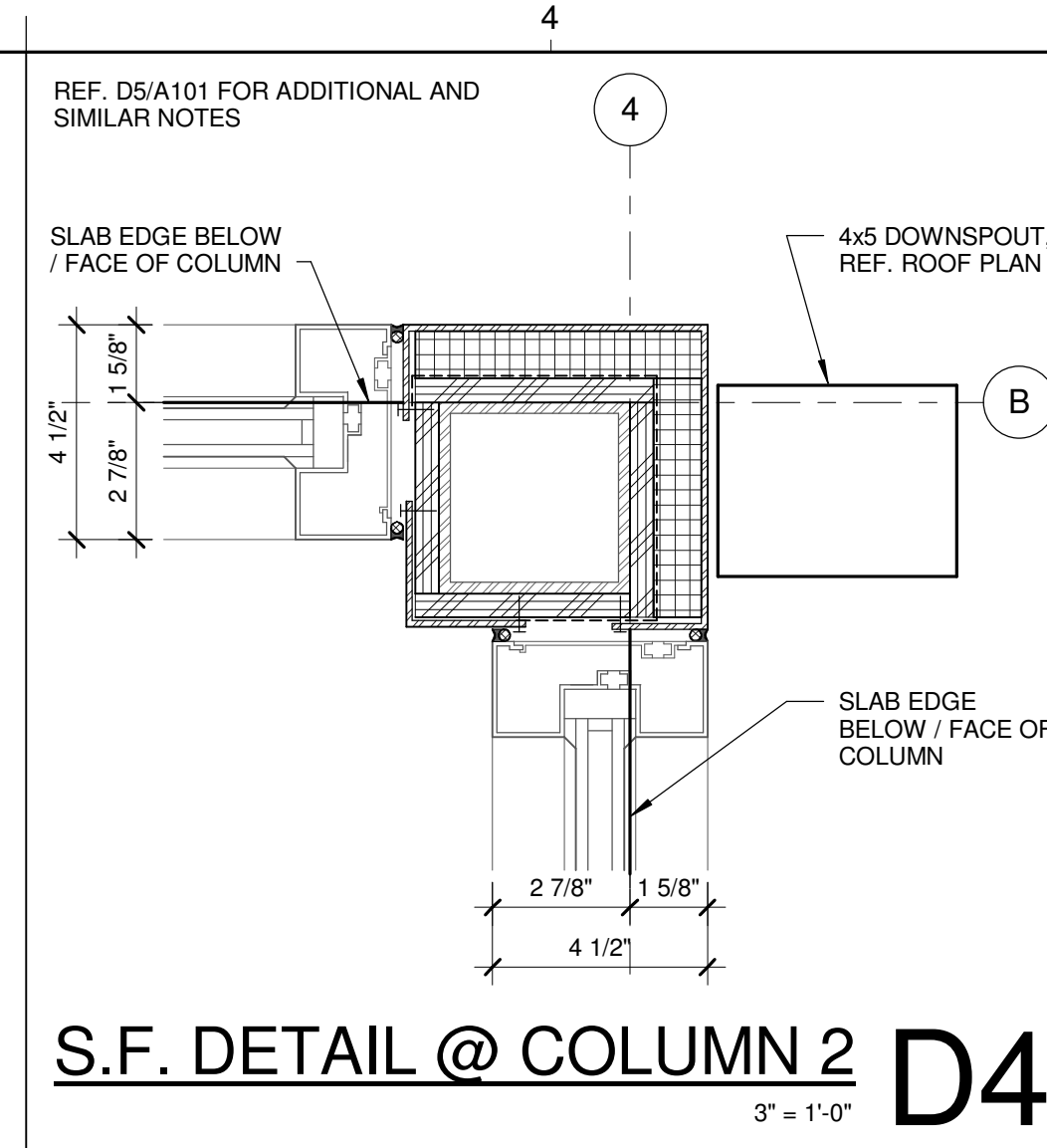
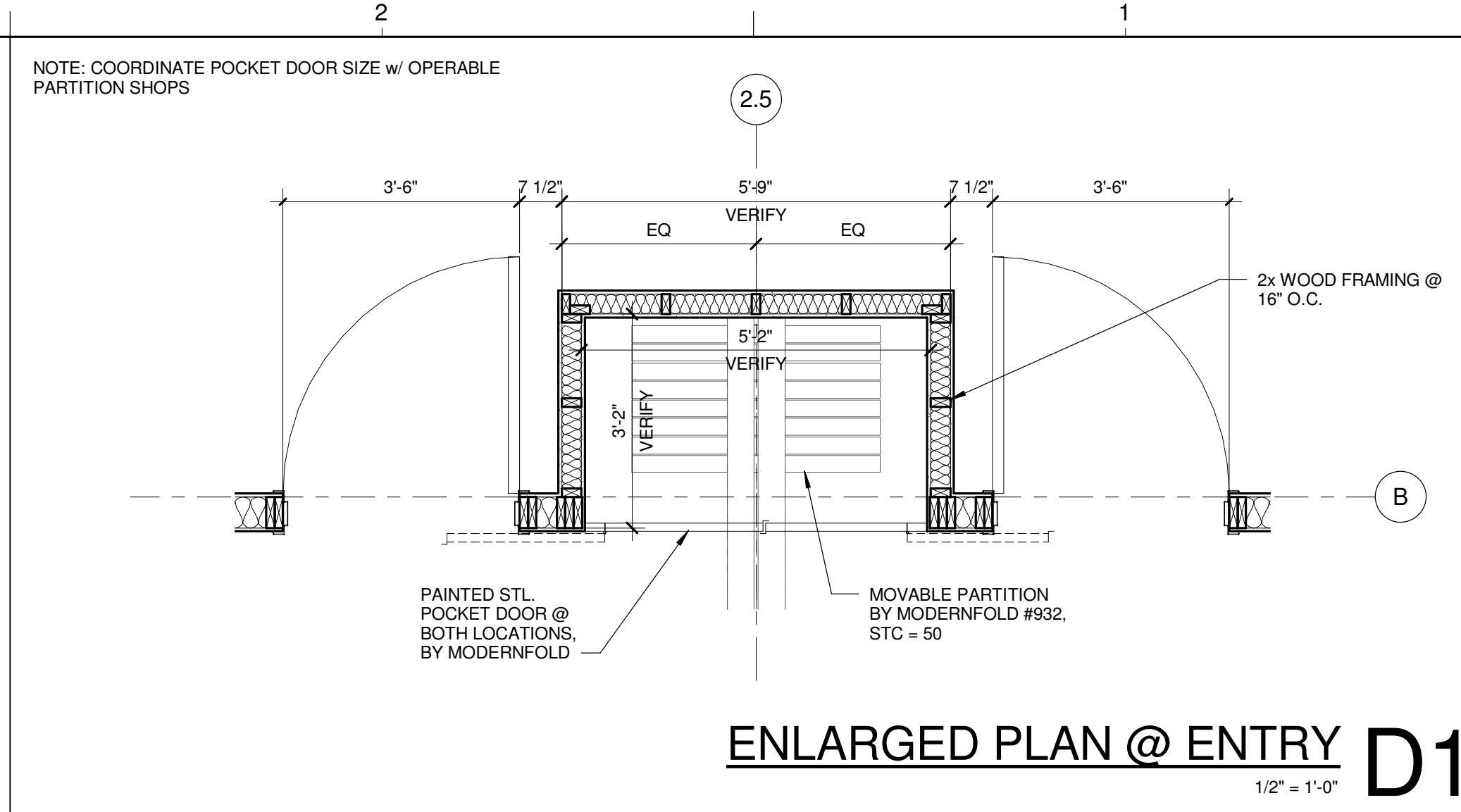


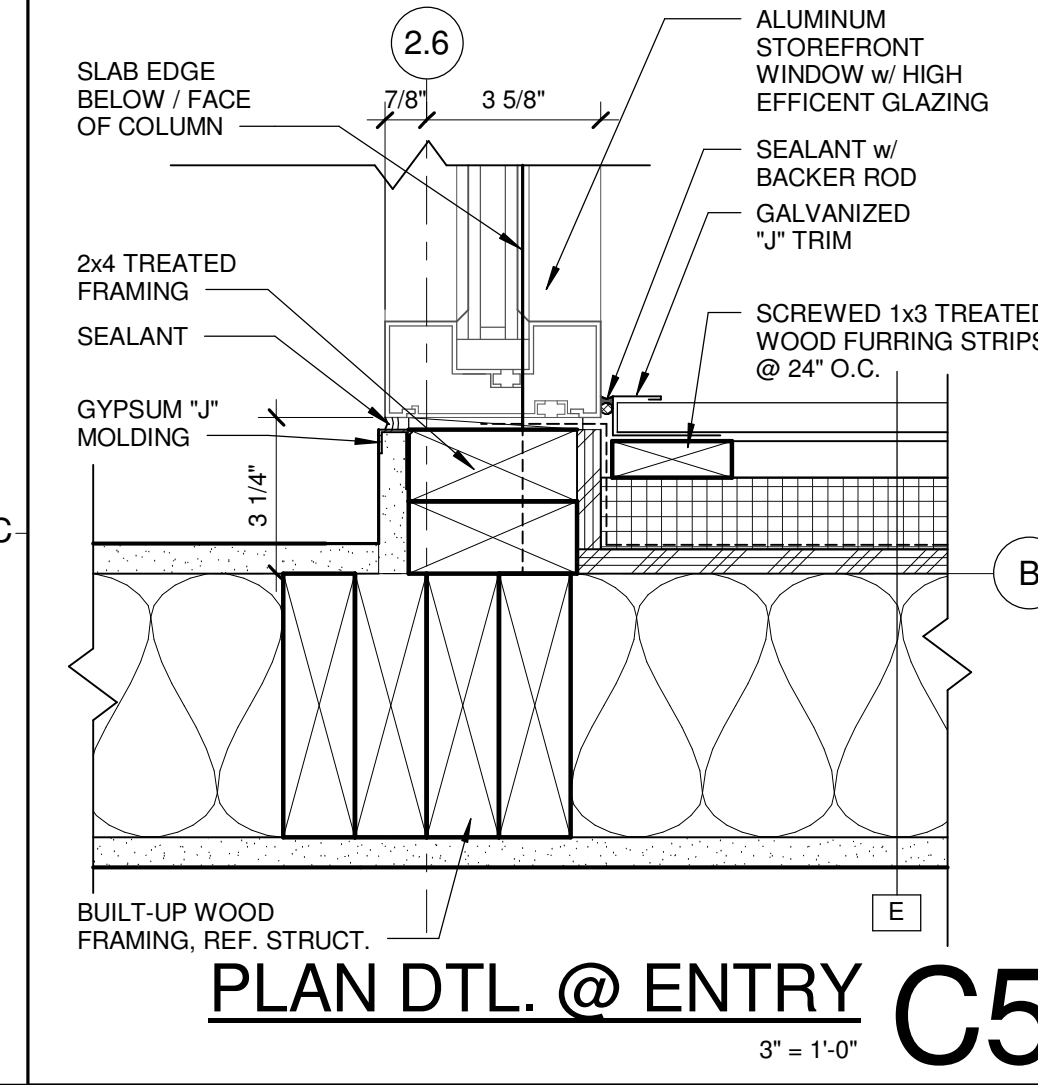
S.F. DETAIL @ COLUMN D5
3" = 1'-0"



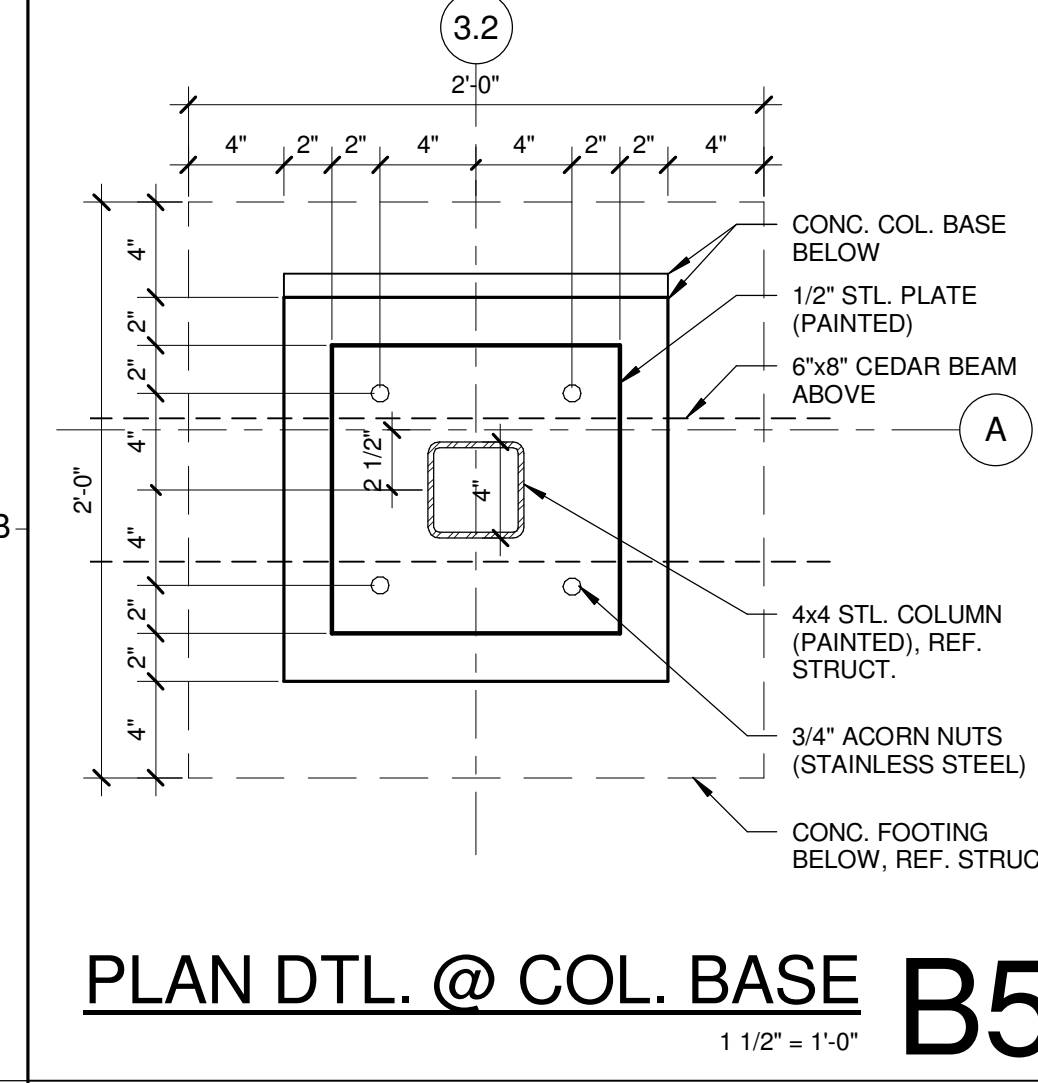
S.F. DETAIL @ COLUMN D4
3" = 1'-0"



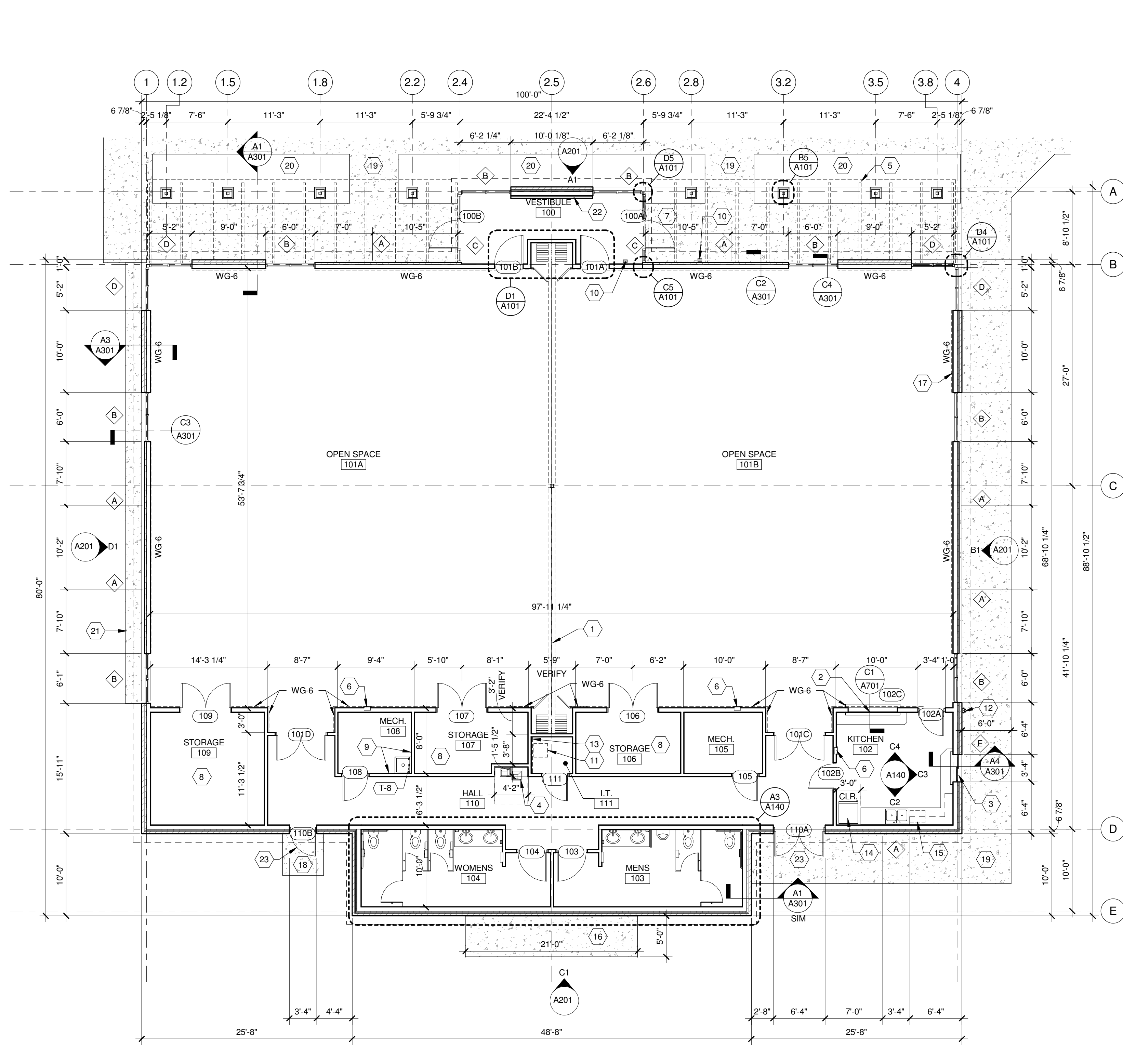
ENLARGED PLAN @ ENTRY D1
1/2" = 1'-0"



PLAN DTL. @ ENTRY C5
3" = 1'-0"



PLAN DTL. @ COL. BASE B5
1 1/2" = 1'-0"



FLOOR PLAN A1
1/8" = 1'-0"

- GENERAL NOTES**
- ALL DIMENSIONS ARE TO EDGE OF SLABS, EDGE OF WALLS OR TO INDICATE CENTERLINES / GRIDS. NOT FACE OF DRYWALL.
 - GRIDLINES ARE SET AT THE EDGES OF SLAB, WALLS OR CENTER OF FOOTINGS AND COLUMNS UNLESS DIMENSIONED OTHERWISE.
 - CONTRACTOR SHALL VERIFY ALL DIMENSIONS AND IMMEDIATELY NOTIFY ARCHITECT OF ANY DISCREPANCIES.
 - ALL WORK TO COMPLY WITH CURRENT LOCAL CODE REQUIREMENTS.
 - ALL DASHED LINES OR GREY FURNITURE AND FURNISHINGS TO BE PROVIDED BY OWNER. GENERAL CONTRACTOR TO COORDINATE INSTALLATION.
 - INTERIOR DIMENSIONS ARE TO FACE OF STUD U.N.O.
 - REFERENCE A701 FOR GYPSUM BOARD CONTROL JOINT LOCATIONS

- FLOOR PLAN NOTES**
- FOLDING PARTITION BY MODERNFOLD MODEL #932 OR EQUAL. COLOR TO BE SELECTED
 - 72x42 SERVING WINDOW w/ MANUAL LOCKABLE METAL ROLL-DOWN SHUTTER SYSTEM BY RAYNOR OR EQUAL. COLOR TO BE SELECTED.
 - 40x40 LOCKABLE HORIZONTAL SLIDING SERVING WINDOW w/ INSULATED GLASS AND SCREEN AND STAINLESS STEEL TRANSACTION TOP - CRL X0 #SW2412 BY C.R. LAURENCE OR EQUAL
 - HIGH/LOW DRINKING FOUNTAIN, REF. MEP DRAWINGS
 - COVERED WALK-WAY / ENTRANCE CANOPY, REF. DETAILS
 - LARSON SEMI-RECESSED STAINLESS STEEL FIRE EXTINGUISHER CABINETS
 - DOOR TO RECEIVE POWER OPERATOR & ROUGH-IN FOR FUTURE ACCESS CONTROL
 - 1/2" PAINTED PLYWOOD 4'-0" TALL ON ALL WALLS
 - FRP WALL PANEL (4"x4") EA. SIDE OF SINK
 - ADA DOOR OPERATOR BUTTONS
 - DATA RACK & A.V. (BY OWNER)
 - FIRE DEPARTMENT CONNECTION, REF. MEP
 - 4x8 SHEET OF PLYWOOD (PAINTED)
 - REFRIGERATOR (BY OWNER) 28" WIDE, 30" DEEP & 67" TALL
 - MICROWAVE (BY OWNER)
 - 4" Poured in place conc. pad, REF. CIVIL
 - INSTALL HIGH IMPACT DRYWALL 4'-0" A.F.F. & WALL GUARD #WG-6 BY PAWNING CORP. @ 3'-0" A.F.F., NOTED BY DASHED LINE
 - 5x5 CONCRETE STOOP
 - CONCRETE SIDEWALK, REF. CIVIL
 - PLANTING BED
 - 2" WIDE MOW STRIP (5" CONC. w/ #4's CONT.)
 - FURR-OUT WALL AS REQUIRE w/ 2x4 STUDS @ 16" O.C. FOR HOSE BIB
 - ROUGH-IN FOR DOOR POSITION SWITCH

- ALTERNATES**
- LED LIGHT FIXTURES
 - BOTTLE FILLER @ WATER FOUNTAIN
 - SOUND SYSTEM UPGRADE
 - HEARING ASSISTANCE LOOP
 - ZIP SYSTEM SHEATHING AND TAPE

100% CD

DATE: 10/21/15

DOUGLAS COUNTY
1100 Massachusetts St.
Lawrence, KS 66044

Multi-Purpose Building

Douglas County 4-H Fairgrounds
Lawrence, KS

TREANOR ARCHITECTS

1640 Vermont
Lawrence, Kansas 66044
Office: 785.842.4839
Fax: 785.842.7536
www.treanorarchitects.com

© 2015 Treanor Architects, P.A.

10-21-15

DRAWN BY: WD
CHECKED BY: CC

REVISIONS		
NO.	DESCRIPTION	DATE

A101

FLOOR PLAN & DETAILS

TREANOR NO. DV12.025.00B

DATE PRINTED: 11/4/2015 3:01:26 PM
FILE PATH: D:\4H Meeting Hall_wd\wg6.dwg